

MCC Wireless connection steps for Windows XP

Here's How to find your wireless card mac address

1. Click the Start menu button on the Windows taskbar.
2. Click Run... on this menu.
3. Type cmd in the text box that appears. A command prompt window launches on the desktop.
4. In this command window, type ipconfig /all. Details are shown for each of the computer's network adapters. (**look for the one that states “Wireless”**)
5. The Physical Address field states the MAC address for that adapter.

Signing the Student Use Form and submitting your mac address

Once you have found your mac address, go out to www.mccks.edu and click on “Admissions” and then on “Campus Technology”, at the top right of the screen will be a link to the “[Student Use Policy](#)”, click on that and read the policy and then you can click on “[Sign the Student Use Form](#)” at the bottom of the page. Here is where you will enter your information, name and mac address for you wireless card.

Configuring the Windows XP Wireless Client

To configure Windows:

1. Click **Start** and select **Control Panel**. Click **Network and Internet Connections** and then **Network Connections**.
Result: The **Wireless Network Connection** icon appears.
2. Right-click on this icon and click **Properties**.
Result: The **Wireless Network Connection Properties** window appears (see Figure 1).

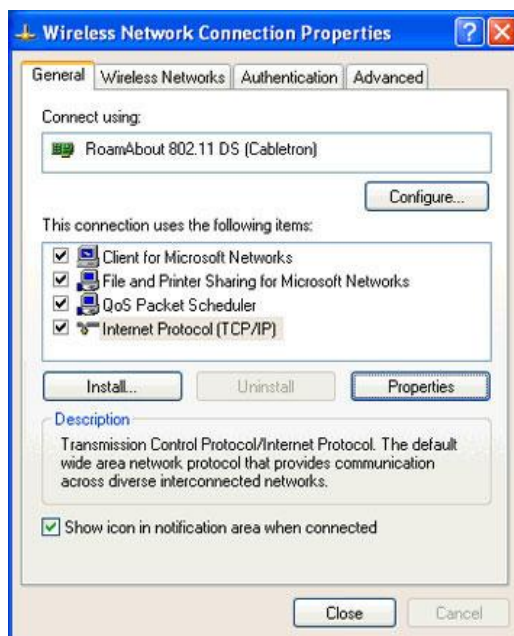


Figure 1: Network Connection Properties

3. Click the **Wireless Networks** tab at the top of the **Wireless Network Connection Properties** window. *Result:* The **Wireless Networks** tab view appears (see Figure 3).

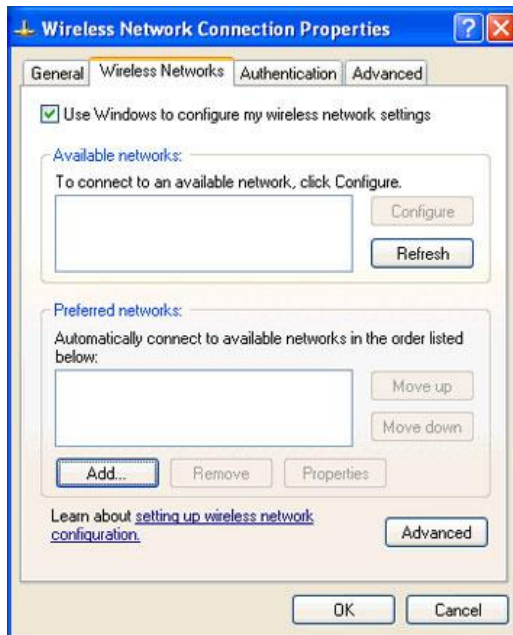


Figure 3: Wireless Networks Tab View

4. Make sure **Use Windows to configure my network settings** is checked.
5. In the section labeled **Preferred Networks**, click **Add**.
Result: The **Wireless Networks Properties** window appears (see Figure 4).

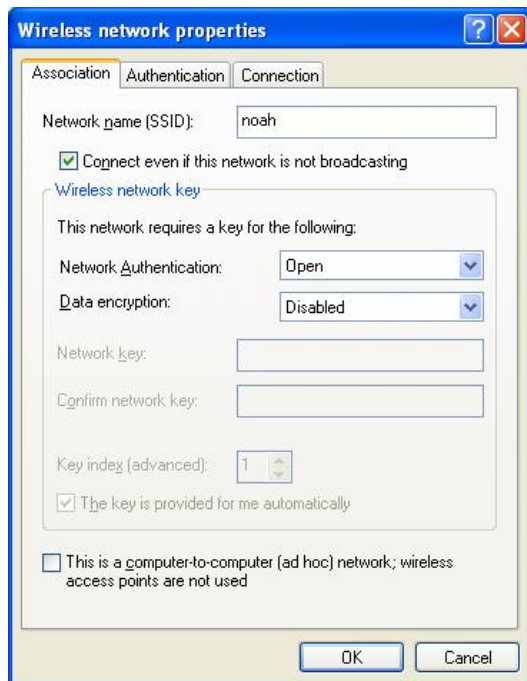


Figure 4: Wireless Network Properties Window

6. If your configuration screen looks different ([example](#)) from figure 4, you most likely need to update your Windows XP to [service pack 2](#).

7. In the **Network Name (SSID)** field, type **noah** in lowercase characters.
8. Click the “Connect even if this network is not broadcasting”.
9. Verify that **Network Authentication** is **Open** and **Data Encryption** is **disabled**.
10. Then click “OK”, Close all remaining windows and wait for the system to be updated with your mac address.

Once your enrollment has been verified and your name and mac address entered into our system you will have MCC Internet access (this can sometimes take as much as 24 hours, usually much less though).