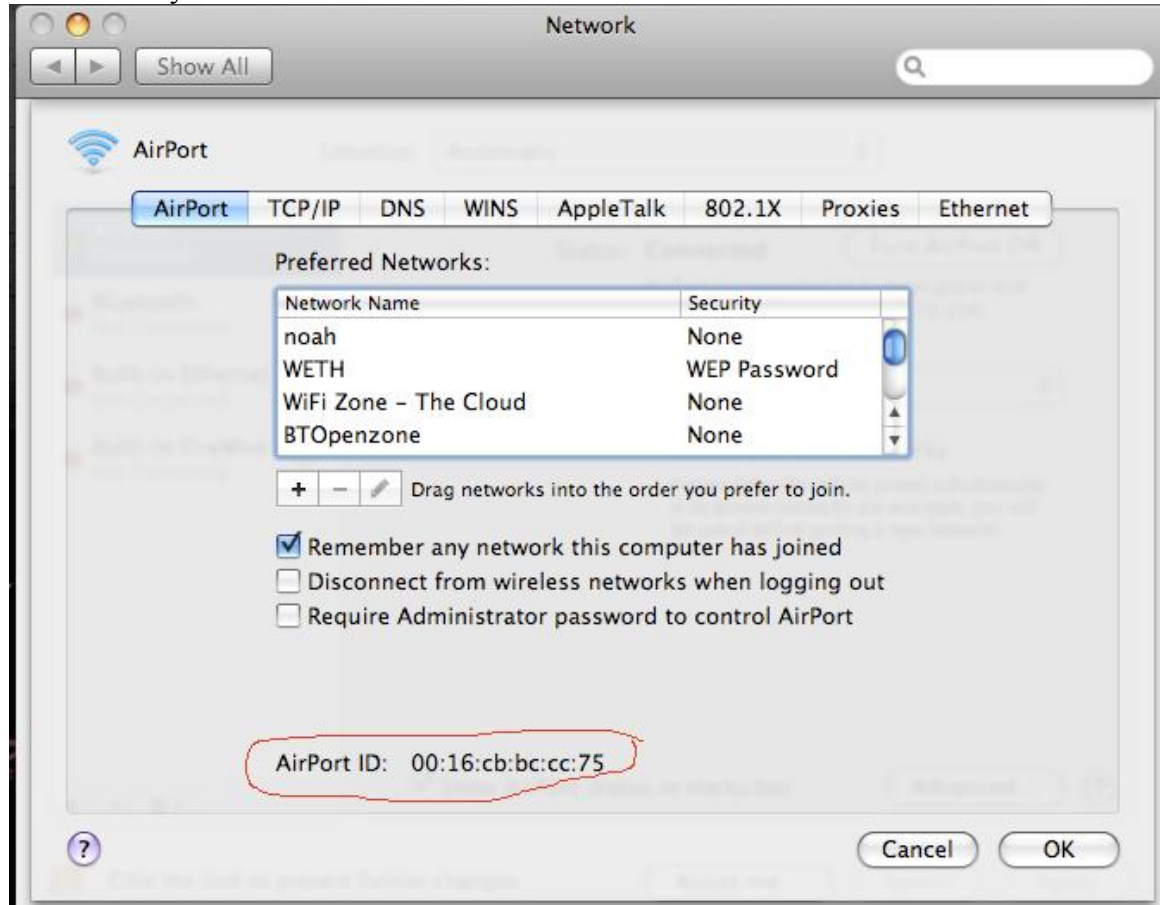


1. Click on the Apple at the top left.
2. Click on System Preferences...
3. Double-Click on the Network icon.
4. Under “Show:”, select Airport.
5. Write down your “AirPort ID”



Signing the Student Use Form and submitting your mac address

Once you have found your mac address, go out to www.mccks.edu and click on “Admissions” and then on “Campus Technology”, at the top right of the screen will be a link to the “[Student Use Policy](#)”, click on that and read the policy and then you can click on “[Sign the Student Use Form](#)” at the bottom of the page. Here is where you will enter your information, name and mac address for you wireless card.

6. With the Network section still open click on By default, join: select “**Preferred Networks**” here.
7. Click on the + sign under Network name.
8. Under network name type “noah”
9. Under wireless Security click on “None” and click “OK”
10. Click “Apply Now”